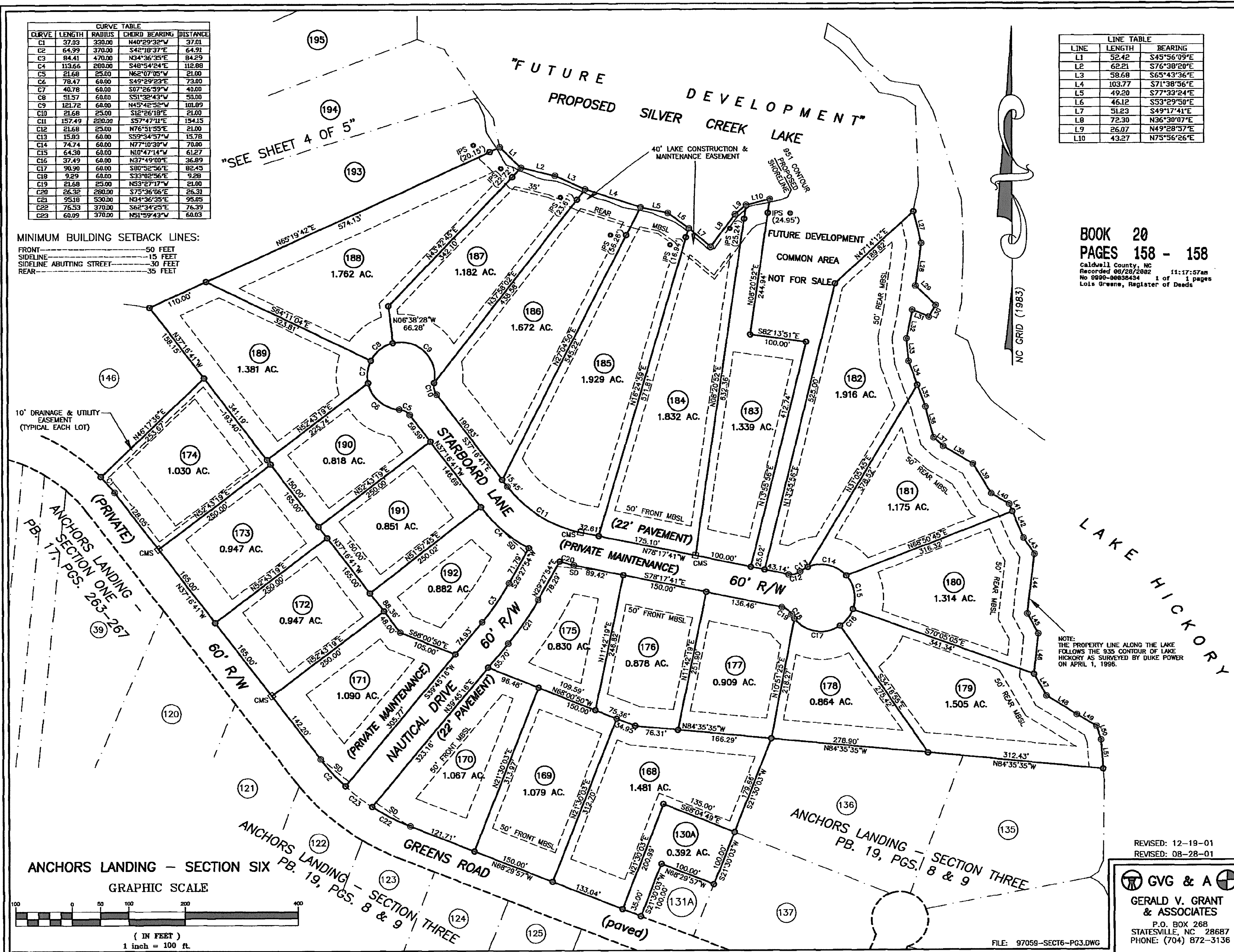


CURVE	LENGTH	RADIUS	CHORD BEARING	DISTANCE
C1	37.03	330.00	N40°29'32"W	37.01
C2	64.99	370.00	S42°18'37"E	64.91
C3	84.41	470.00	N34°36'35"E	84.29
C4	113.66	280.00	S48°54'24"E	112.88
C5	21.68	25.00	N62°07'05"W	21.00
C6	78.47	60.00	S49°29'23"E	73.00
C7	40.78	60.00	S07°26'39"W	40.00
C8	51.57	60.00	S51°32'43"W	50.00
C9	121.72	60.00	N45°42'52"W	101.89
C10	21.68	25.00	S12°26'18"E	21.00
C11	157.49	220.00	S57°47'11"E	154.15
C12	21.68	25.00	N76°51'55"E	21.00
C13	15.83	60.00	S59°34'57"W	15.78
C14	74.74	60.00	N77°10'30"W	70.00
C15	64.30	60.00	N10°47'14"W	61.27
C16	37.49	60.00	N37°49'00"E	36.89
C17	90.90	60.00	S80°52'56"E	82.45
C18	9.29	60.00	S33°02'56"E	9.28
C19	21.68	25.00	N53°27'17"W	21.00
C20	26.32	280.00	S75°36'06"E	26.31
C21	95.18	530.00	N34°36'35"E	95.05
C22	76.53	370.00	S62°34'25"E	76.39
C23	60.09	370.00	N51°59'43"W	60.03

LINE	LENGTH	BEARING
L1	52.42	S45°56'09"E
L2	62.21	S76°38'20"E
L3	58.68	S65°43'36"E
L4	103.77	S71°38'56"E
L5	49.20	S77°33'24"E
L6	46.12	S53°29'50"E
L7	51.23	S49°17'41"E
L8	72.30	N36°30'07"E
L9	26.07	N49°28'57"E
L10	43.27	N75°56'26"E

MINIMUM BUILDING SETBACK LINES:
 FRONT — 50 FEET
 SIDELINE — 15 FEET
 SIDELINE ABUTTING STREET — 30 FEET
 REAR — 35 FEET

BOOK 20
 PAGES 158 - 158
 Caldwell County, NC
 Recorded 06/28/2002 11:17:57am
 No 9936-8888434 1 of 1 pages
 Lois Greene, Registrar of Deeds



NOTE:
 THE PROPERTY LINE ALONG THE LAKE
 FOLLOWS THE 955 CONTOUR OF LAKE
 HICKORY AS SURVEYED BY DUKE POWER
 ON APRIL 1, 1956.

REVISED: 12-19-01
 REVISED: 08-28-01

G & A
 GERALD V. GRANT
 & ASSOCIATES
 P.O. BOX 268
 STATESVILLE, NC 28687
 PHONE: (704) 872-3136

FILE: 97059-SECT6-PG3.DWG